

# Starrett®

Precision, Quality, Innovation

## OPTICAL COMPARATORS

Vision Systems

Vision Inspection Systems

Optical Comparators

Software





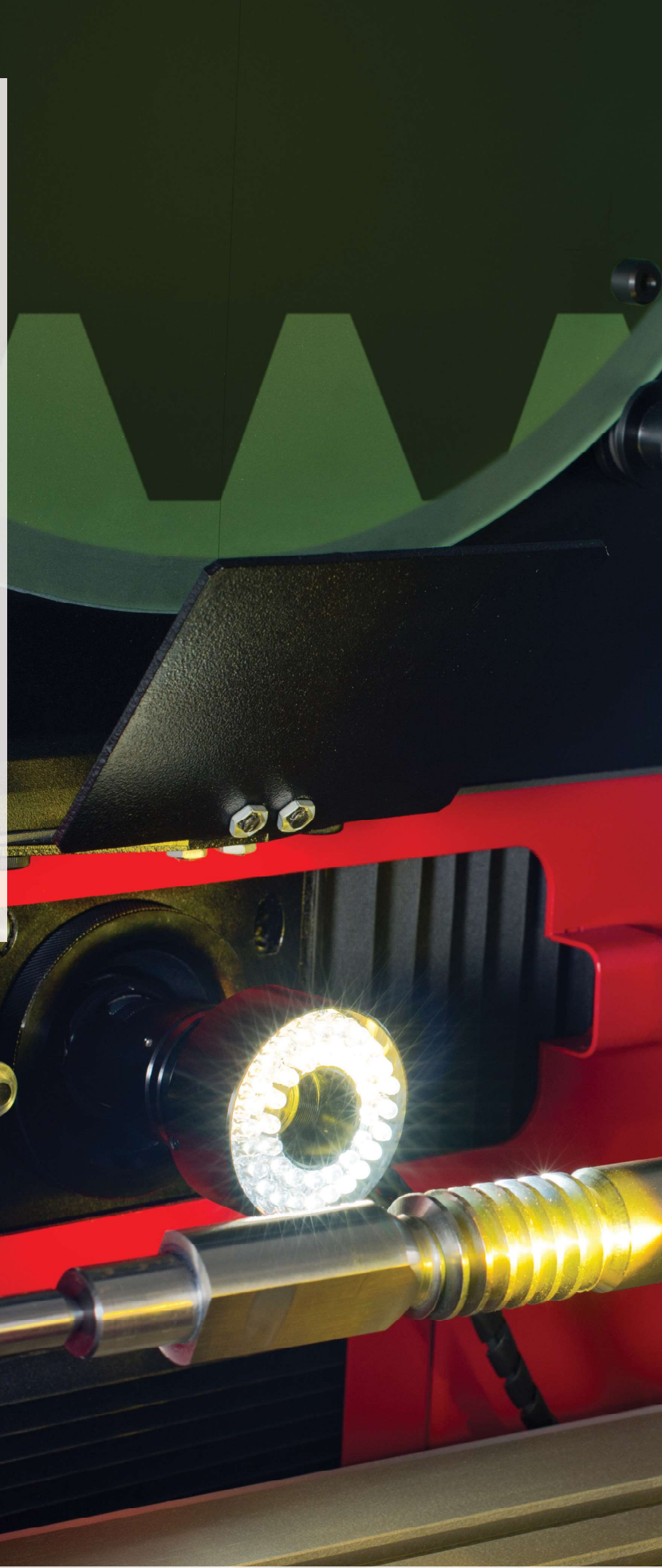
# PRECISION, QUALITY, INNOVATION

For more than 135 years, manufacturers, builders and craftsmen worldwide have depended upon tools from the L.S. Starrett Company to ensure the consistent quality of their manufacturing processes.

They know that the Starrett name on Optical Comparators, Vision and Multi-Sensor Metrology systems, precision hand tools, gage blocks, hand tools, power tool accessories, saws, laser measurement, force and material testing means exceptional quality, innovative products and expert technical assistance.

With strict quality control, state-of-the-art equipment and an ongoing commitment to producing products with superior quality, the 5,000 plus products in today's Starrett line continue to be the most accurate, robust and durable tools available.

This catalog features Starrett Metrology Equipment, their applications and characteristics.







## FOR OVER 135 YEARS, WITH INNOVATIVE TECHNOLOGIES.

More than 5,000 products including precision tools, vision systems, force measurement systems, non-contact measurement systems, optical comparators, band saw blades, band saw machines, hand tools and power tools accessories.

Read more: [www.starrett.co.uk](http://www.starrett.co.uk)



# FACTORIES AROUND THE WORLD



1-Athol, Massachusetts, USA



2-Laguna Hills, California, USA



3-Waite Park, Minnesota, USA



4-Cleveland, Ohio, USA

FACTORIES



 Factories and Distribution Centers

 Starrett Distribution Centers and Offices





5-Mount Airy, North Carolina, USA



6-Columbus, Georgia, USA



7-Itu, São Paulo, Brazil



8-Jedburgh, Scotland



9-Suzhou, China





# HORIZONTAL BENCH OPTICAL COMPARATOR

## HE400

The most economical of our bench top comparators, the HE400 offers a 16" (400mm) diameter screen, X-Y stage travel, bayonet-style interchangeable lenses and Q-axis angular readout: all to improve capacity and performance. These latest horizontal comparators are fitted with either MetLogix™ M1 or M2 measuring software or Quadra-Chek® digital readout systems as standard, making them simple to use, but having the power to satisfy the most complex measuring requirements.

### OPERATOR INTERFACE

Feature	MetLogix™		Quadra-Chek®	
	M1	M2	QC121	QC221
Mounted to comparator arm	x	x	x	x
Color graphics	x	x		
Touch screen operation	x	x		
MS Windows® operating system	x	x		
X-Y-Q axis digital readout	x	x	x	x
2D geometry software with skew	x	x	x	x
Optical edge detection option	x	x		x
Software developer	MetLogix™	MetLogix™	Metronics/Heidenhain	Metronics/Heidenhain



### SPECIFICATIONS

HE400	
Horizontal Travel	10" (250mm)
Vertical Travel	4" (100mm)
Focus Travel	1-1/8" (28mm)
Top Plate*	18.9" x 4.7" (480 x 120mm)
Image	Inverted and reversed

\*With machined single slot for easy fixturing





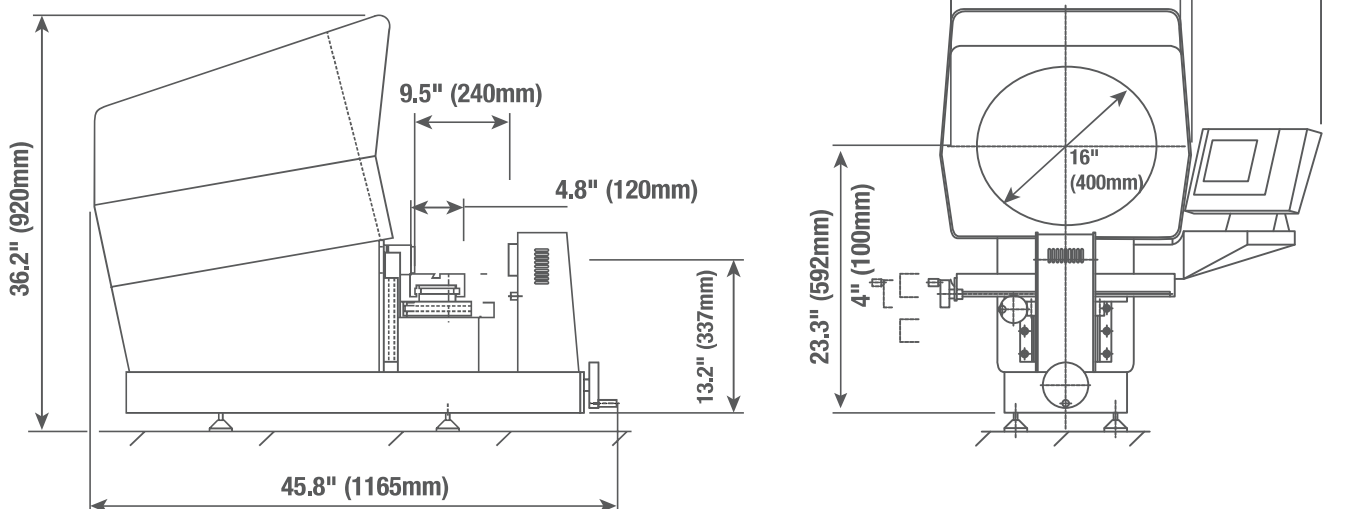
## FEATURES AND SPECIFICATIONS

- All metal construction
- Single bayonet-style lens mounting system
- Collimating condenser with yellow/green filter and provision to mount further accessories
- Linear encoder (glass scale) on both X and Y axes
- LED profile and surface illumination
- Fully retractable flexible duplex fiber optic surface illumination
- Digital protractor for accurate angle measurement 1' resolution
- Available with MetLogix™ M1 tablet, M2 PC-based touch screen measuring software or Quadra-Chek® digital readout system
- Fine adjustment on all axes
- Quick mechanism on the X-axis

## OPTIONS

- Six interchangeable fixed magnification lenses including 10x, 20x, 31.25x, 50x and 100x
- Canopy and curtains (designed to mount on cabinet stand)
- Purpose built cabinet stand
- Extensive line of accessories

## HE400 DIMENSIONS



## WEIGHT AND DIMENSIONS

	HE400
Net Weight	230lbs 105kg
Gross Weight	300lbs 135kg
Shipping Dimensions	49" (L) x 32" (W) x 51" (H)



# HORIZONTAL BENCH-TOP OPTICAL COMPARATOR

## HB400

The HB400 provides exceptional performance with a 16" (400mm) diameter viewing screen and high 110lb workload capacity. Single bayonet-style lens mount accepts a choice of interchangeable fixed lenses or choice of video camera system. Available with optional Optical and/or Video edge detection, optional motorized X-Y axes, or fully automatic CNC controls, this comparator provides performance previously only available with floor-standing models.

### OPERATOR INTERFACE

Feature	MetLogix™			Quadra-Chek®		
	M1	M2	M3	QC121	QC221	QC5200
Mounted to comparator arm	x	x		x	x	x
Color graphics	x	x	x			
Touch screen operation	x	x	x			
MS Windows®/Android operating system	Android	Windows	Windows			
X-Y-Q axis digital readout	x	x	x	x	x	x
2D geometry software with skew	x	x	x	x	x	x
Optical edge detection option	x	x	x	x	x	x
Video edge detection option			x			x
CAD file import and export option			x			x
CNC drive option		x	x		x	x
Software developer	MetLogix™	MetLogix™	MetLogix™	Metronics / Heidenhain	Metronics / Heidenhain	Metronics / Heidenhain



### SPECIFICATIONS

HB400	
Horizontal Travel	12" (300mm)
Vertical Travel	6" (150mm)
Focus Travel	2" (50mm)
Top Plate*	21" x 5" (530 x 120mm)
Image	Erect and reversed

\*With machined slots for easy fixturing

# Starrett® PRECISION OPTICAL HB400



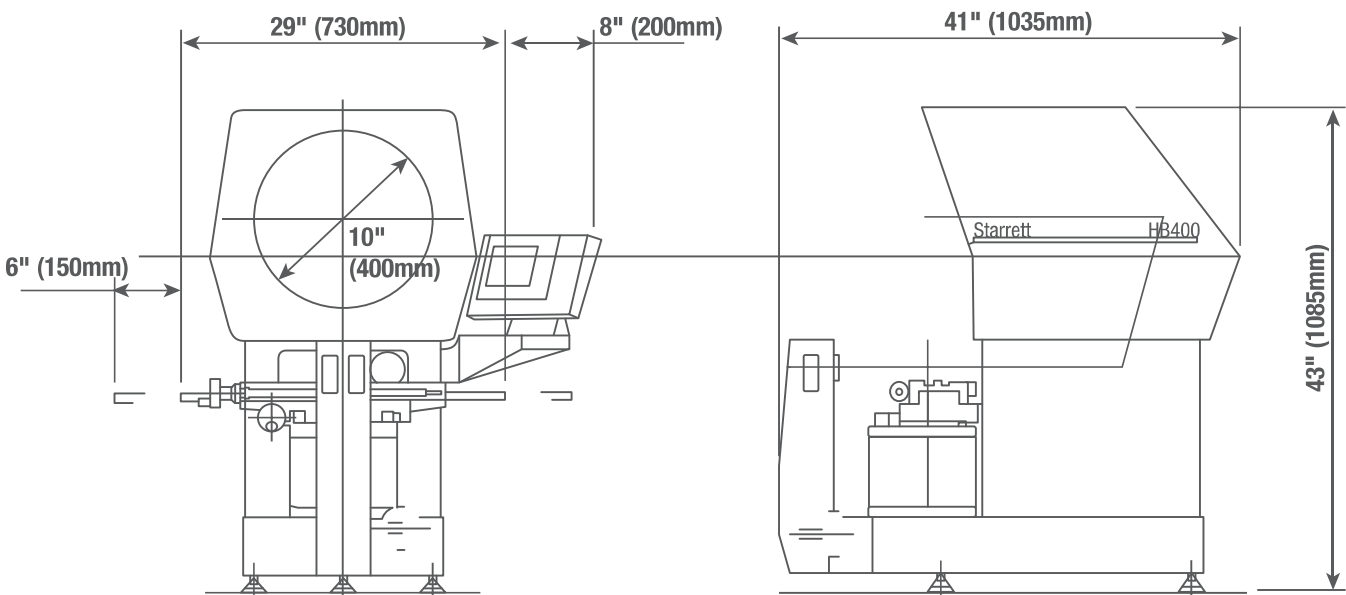
## FEATURES AND SPECIFICATIONS

- All metal construction with hard-anodized stage tooling plate
- Single bayonet-style lens mounting system
- Collimating condenser with yellow/green filter and provision to mount further accessories
- Linear encoder (glass scale) on both X and Y axes
- LED profile and surface illumination
- Fixed duplex fiber optic surface illumination
- Digital protractor for accurate angle measurement (1' resolution) via Q-axis readout
- Available with MetLogix™ M1 tablet, M2 or M3 PC-based touch screen measuring software or Quadra-Chek® digital readout system
- Fine adjustment on all axes
- Quick release mechanism on the X-axis

## OPTIONS

- Six interchangeable fixed magnification lenses including 10x, 20x, 25x, 31.25x, 50x and 100x
- Optional 5x fixed lens system available by special order
- Optional extended travel workstage 16" (400mm)
- Automatic optical edge detection
- Automatic video edge detection (available only with OV2 or TOV2 video cameras)
- OV2 Video Camera with 6.5:1 zoom lens
- TOV2 Telecentric Video Camera with choice of 0.16x, 0.3x or 0.5x fixed magnification lens
- Motorized X and Y axes
- Fully automatic CNC controls
- Swing-away lamp house
- Canopy and curtains (designed to mount on cabinet stand)
- Purpose built cabinet stand
- Extensive line of accessories

## HB400 DIMENSIONS



## WEIGHT AND DIMENSIONS

	HB400
Net Weight	320lbs 145kg
Gross Weight	385lbs 175kg
Shipping Dimensions	49" (L) x 32" (W) x 51" (H)



# HORIZONTAL BENCH-TOP OPTICAL COMPARATOR

## HD400

### DUAL LENS

The HD400 is a dual lens optical comparator offering a two-lens mount allowing instant switching between two magnification lenses or video camera adapter. Optional automatic edge detection or video edge detection removes operator subjectivity in locating edges of the part being measured. The HD400 can also be equipped with optional extended stage travel to 16" (400mm), motorized stage or fully automated CNC controls.

#### OPERATOR INTERFACE

Feature	MetLogix™			Quadra-Chek®	
	M1	M2	M3	QC221	QC5200
Mounted to comparator arm	x	x		x	x
Color graphics	x	x	x		
Touch screen operation	x	x	x		
MS Windows® operating system	x	x	x		
X-Y-Q axis digital readout	x	x	x	x	x
2D geometry software with skew	x	x	x	x	x
Optical edge detection option	x	x	x	x	x
Video edge detection			x		x
CAD file import and export option			x		x
CNC drive option		x	x	x	x
Software developer	MetLogix™	MetLogix™	MetLogix™	Metronics / Heidenhain	Metronics / Heidenhain

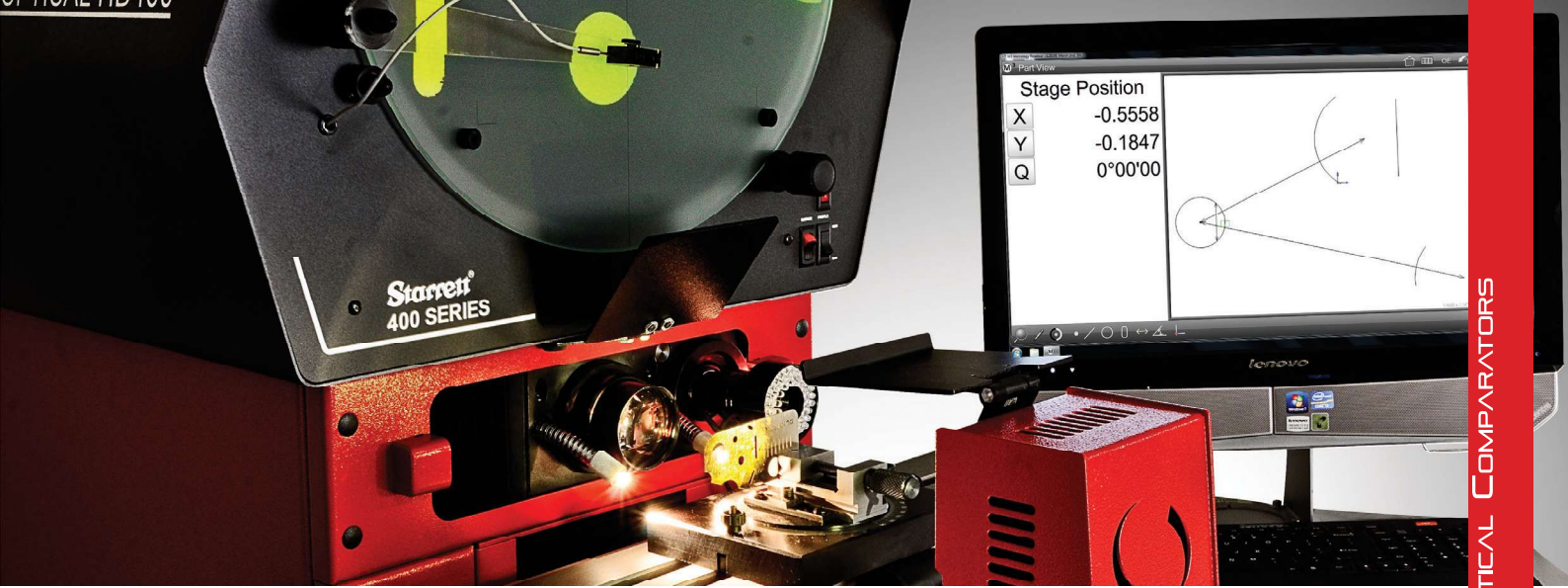


#### SPECIFICATIONS

##### HD400

Horizontal Travel	16" (400mm)
Vertical Travel	6" (150mm)
Focus Travel	2" (50mm)
Top Plate*	21" x 5" (530 x 120mm)
Image	Erect and reversed

\*With machined slots for easy fixturing



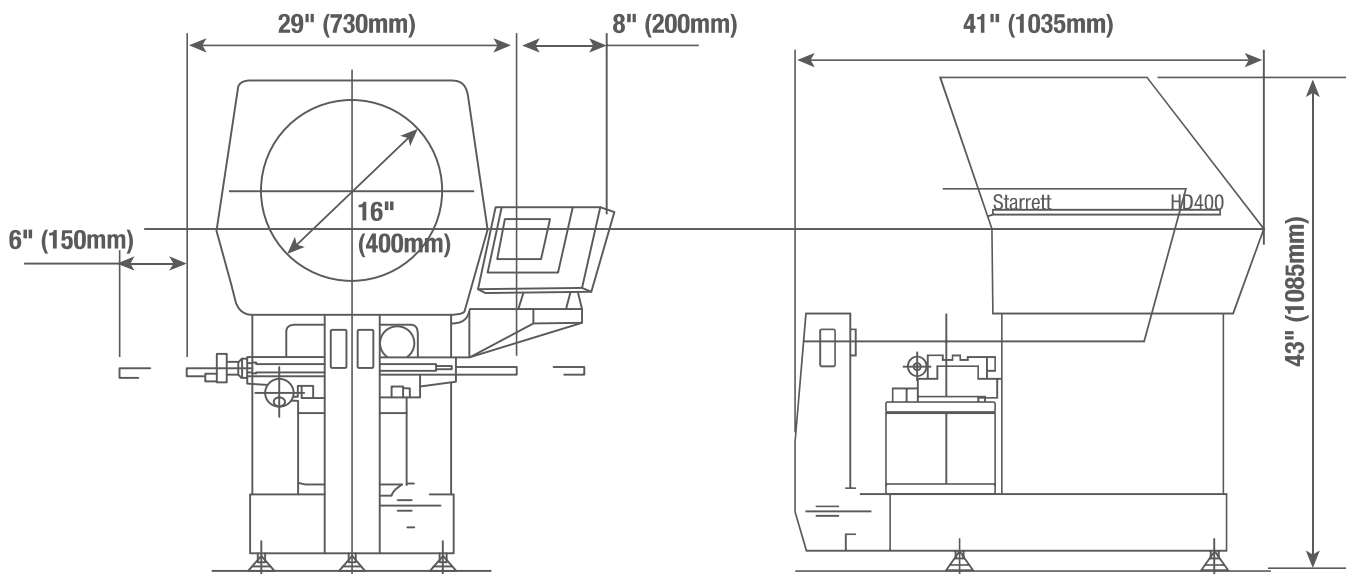
### FEATURES AND SPECIFICATIONS

- All metal construction with hard-anodized stage tooling plate
- 16" (400mm) diameter screen
- Dual-lens mounting system
- Collimating condenser with yellow/green filter and provision to mount further accessories
- Linear encoder (glass scale) on both X and Y axes
- LED profile and surface illumination
- Digital protractor for accurate angle measurements (1' resolution) via Q-axis readout
- Helix adjustment for accurate thread form inspection
- Available with MetLogix M2 or M3 PC-based touch screen measuring software or Quadra-Chek® digital readout system
- Fine adjustment on all axes
- Quick release mechanism on the X-axis

### OPTIONS

- Six interchangeable fixed magnification lenses including 10x, 20x, 25x, 31.25x, 50x and 100x
- Optional 5x fixed lens system available by special order
- Automatic optical edge detection
- Automatic video edge detection (available only with OV2 or TOV2 video cameras)
- OV2 Video Camera with 6.5:1 zoom lens
- TOV2 Telecentric Video Camera with choice of 0.16x, 0.3x, or 0.5x fixed magnification lens
- Motorized X and Y axes
- Fully automatic CNC controls
- Swing-away lamp house
- Canopy and curtains (designed to mount on Starrett cabinet stand)
- Purpose built cabinet stand
- Extensive line of accessories

### HD400 DIMENSIONS



#### WEIGHT AND DIMENSIONS

	HD400
Net Weight	320lbs
	145kg
Gross Weight	385lbs
	175kg
Shipping Dimensions	49" (L) x 32" (W) x 51" (H)



# VERTICAL BENCH-TOP OPTICAL COMPARATOR

## VB300

The VB300 is another optical comparator built to the Starrett trademark formula: high performance at a low price. This vertical bench-top comparator is designed to meet the demands of modern industry, and is ideal for the rapid inspection of small light-weight components, stampings, plastic molding, electronic components, small turned parts, and more.

### OPERATOR INTERFACE

Feature	Integral LED readout	MetLogix™		Quadra-Chek®	
		M1	M2	QC121	QC221
Touch screen operation		x	x		
Angular digital measurement in readout	x	x	x	x	x
X-Y-Z axis digital readout	x	x	x	x	x
Geometric function digital readout		x	x		x
Optional automatic edge detection		x	x	x	x



### SPECIFICATIONS

VB300	
Horizontal Travel	4" (100mm)
Vertical Travel	4" (100mm)
Focus Travel	4" (100mm)
Top Plate	9" x 9" (225 x 225mm)
Glass Insert	6" x 6" (150 x 150mm)
Image	Erect and reversed



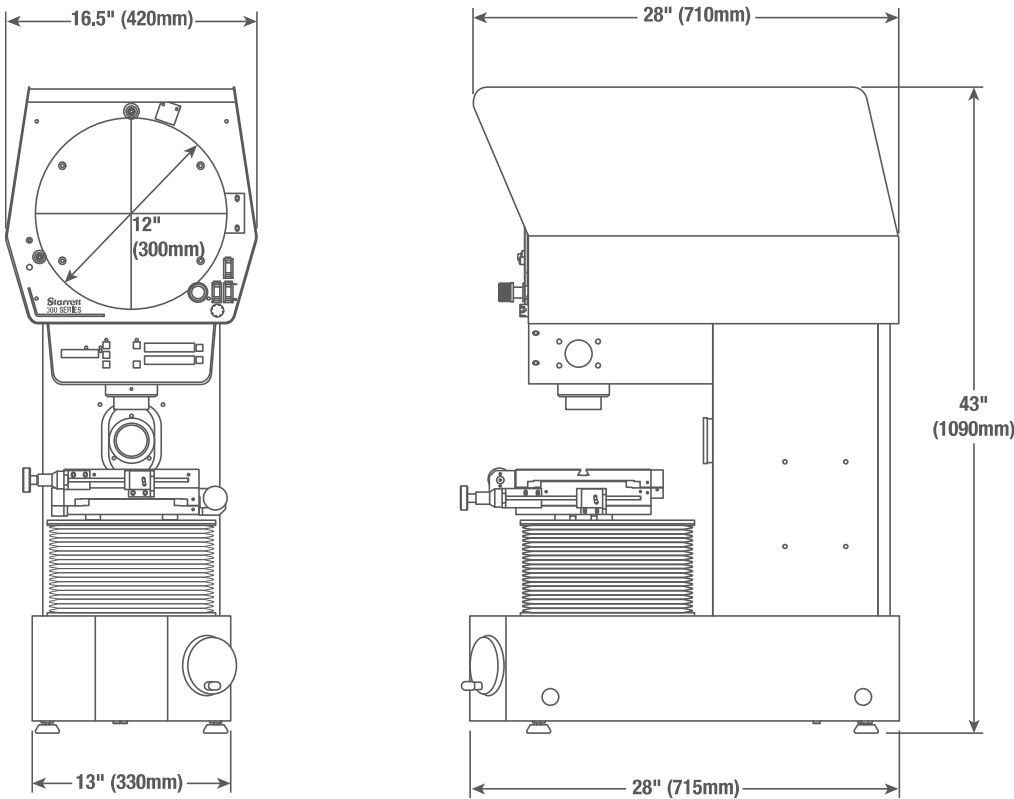
**FEATURES AND SPECIFICATIONS**

- All metal construction for optimum performance
- 12" (300mm) diameter screen with overlay clips
- Linear encoder (glass scale) on both X and Y axes
- Stage weight capacity: 11lbs (5kg) (evenly distributed)
- LED profile and surface illumination
- Screen driven Q-axis
- Quick release mechanism on X-axis and Y-axis
- Available with a simple integrated LED readout display (as shown) or choice of the new MetLogix™ or Quadra-Chek® digital readout systems

**OPTIONS**

- Choice of four fixed magnification lenses including 10x, 20x, 25x and 50x
- Purpose built cabinet stand
- Precision Centers and Vees accessory available

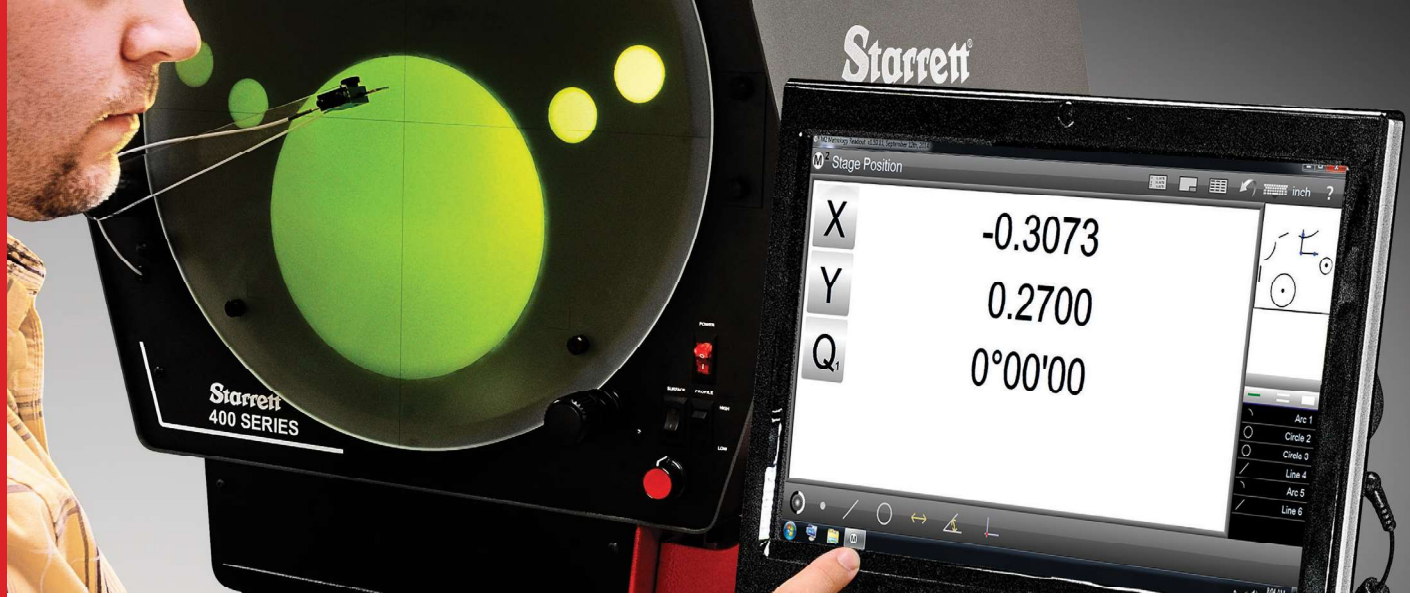
**VB300 DIMENSIONS**



**WEIGHT AND DIMENSIONS**

	<b>VB300</b>
Net Weight	423lbs 192kg
Gross Weight	443lbs 201kg
Gross Dimensions (L x W x H)	44" x 33" x 52"





## VERTICAL BENCH-TOP OPTICAL COMPARATOR

### VB400

The VB400 Vertical Optical Comparator allows flat parts to be simply laid on a glass insert in the workstage. Features include a 16" (400mm) diameter vertical screen, ultra-bright LED profile and surface illumination, and linear encoder scales for .00002" (0.5µm) resolution.

#### OPERATOR INTERFACE

Feature	MetLogix™		Quadra-Chek®	
	M1	M2	QC121	QC221
Mounted to comparator arm	x	x	x	x
Color graphics	x	x		
Touch screen operation	x	x		
MS Windows® operating system	x	x		
X-Y-Q axis digital readout	x	x	x	x
2D geometry software with skew	x	x	x	x
Optical edge detection option	x	x	x	x
Software developer	MetLogix™	MetLogix™	Metronics/Heidenhain	Metronics/Heidenhain



#### SPECIFICATIONS

##### VB400

Horizontal Travel	8" (200mm)
Vertical Travel	4" (100mm)
Focus Travel	4" (100mm)
Top Plate*	16" x 9" (400 x 230mm)
Image	Erect and reversed

\*With machined slots for easy fixturing

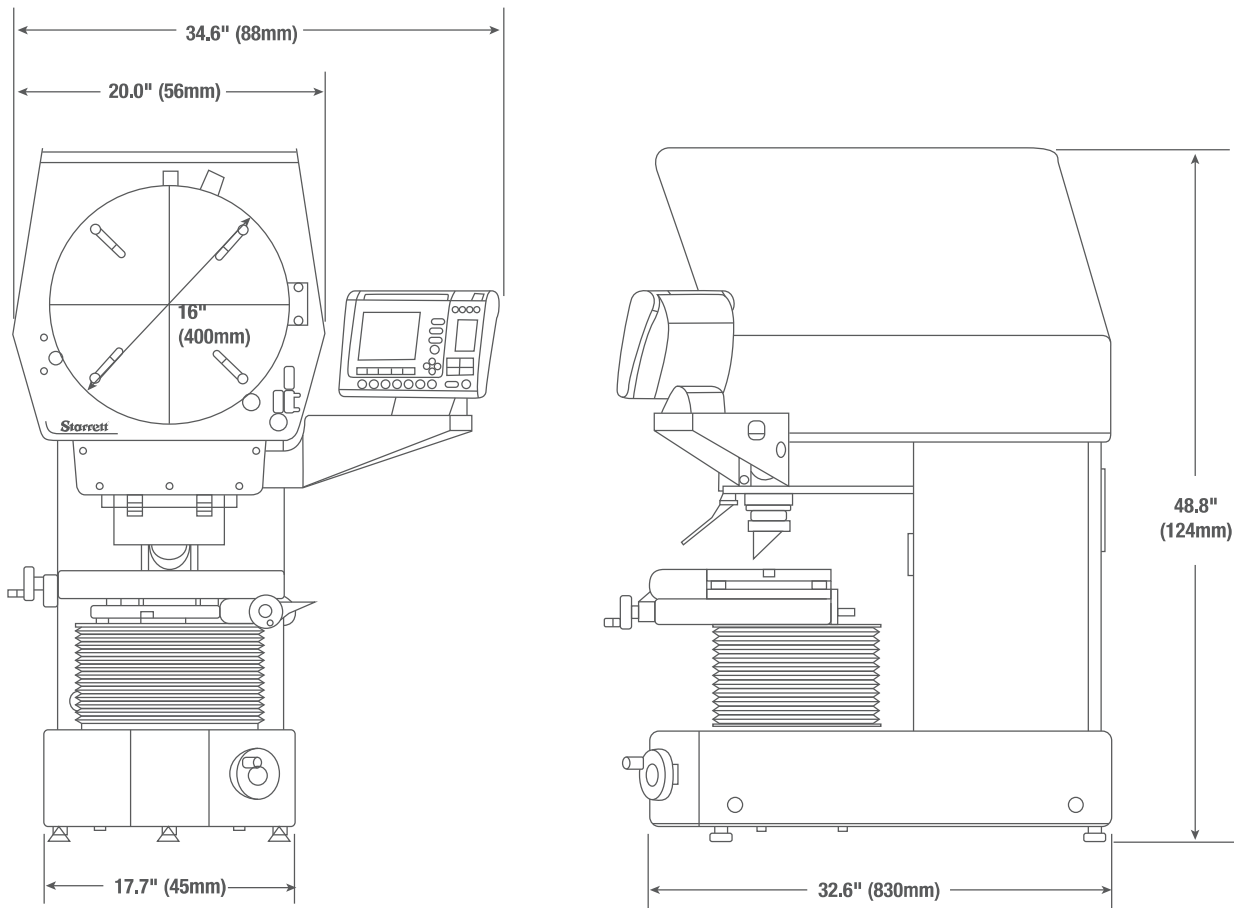
## FEATURES AND SPECIFICATIONS

- All metal construction
- 16" (400mm) diameter screen
- Collimating condenser with yellow/green filter and provision to mount further accessories
- Linear encoder (glass scale) on both X and Y axes
- LED profile and surface illumination
- Digital protractor for accurate angle measurements (1' resolution) via Q-axis readout
- Available with MetLogix™ M1 tablet, M2 PC-based touch screen measuring software or Quadra-Chek® digital readout system
- Fine adjustment on all axes
- Quick release mechanism on the X-axis

## OPTIONS

- Choice of six fixed magnification lenses including 10x, 20x, 25x, 31.25X, 50x and 100x
- Canopy and curtains (designed to mount on cabinet stand)
- Purpose built cabinet stand
- Work holding accessories

## VB400 DIMENSIONS



## WEIGHT AND DIMENSIONS

	VB400
Net Weight	423lbs 192kg
Gross Weight	443lbs 201kg
Shipping Dimensions (L x W x H)	49" x 32" x 51"



# VERTICAL FLOOR STANDING OPTICAL COMPARATOR

## VF600

If your measuring requirements demand the use of a large screen vertical axis comparator, then look no further than the VF600. Ideal for the larger components found in the electronics, stamping, and extrusion industries, the VF600 is the ultimate in vertical axis optical comparators; a design based on 35 years of knowledge in the manufacture of high performing optical comparators.

### OPERATOR INTERFACE

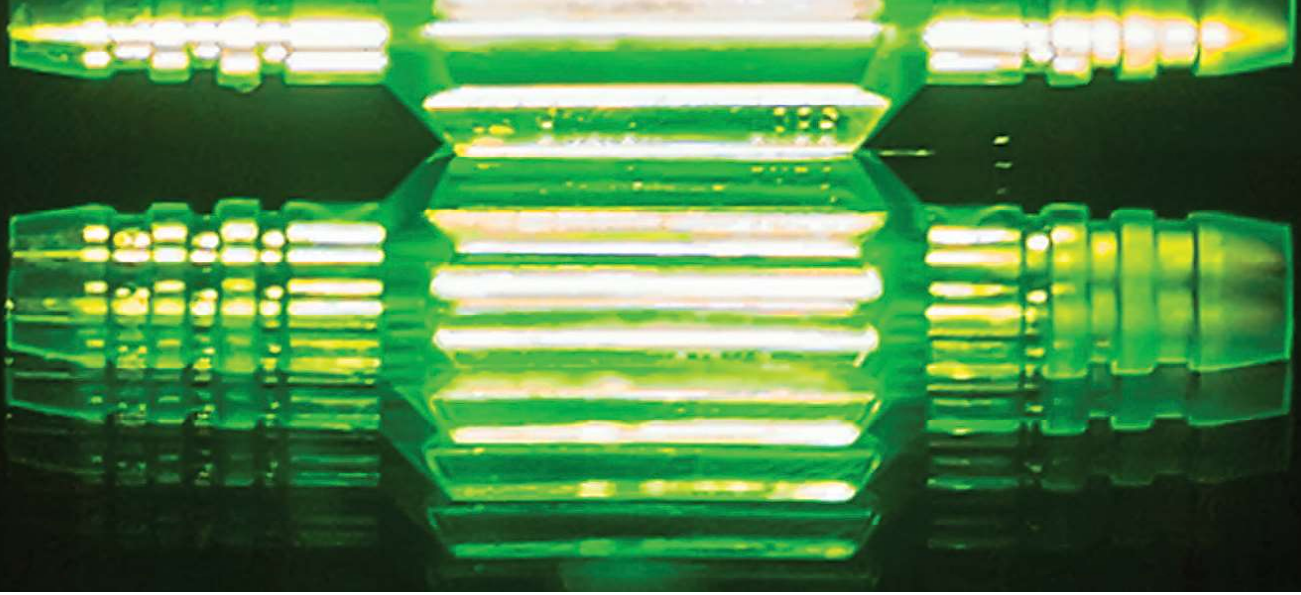
Feature	MetLogix™ M2	Quadra-Chek® QC221
Mounted to comparator arm	x	x
Color graphics	x	
Touch screen operation	x	
MS Windows® operating system	x	
X-Y-Q axis digital readout	x	x
2D geometry software with skew	x	x
Optical edge detection option	x	x
Software developer	MetLogix™	Metronics/Heidenhain



### SPECIFICATIONS

VF600	
Horizontal Travel	8" (200mm)
Vertical Travel	4" (100mm)
Focus Travel	4" (100mm)
Top Plate*	16" x 9" (400 x 230mm)
Glass Insert	9-1/4" x 5-1/2" (235 x 140mm)
Image	Erect and reversed

\*With machined slots for easy fixturing



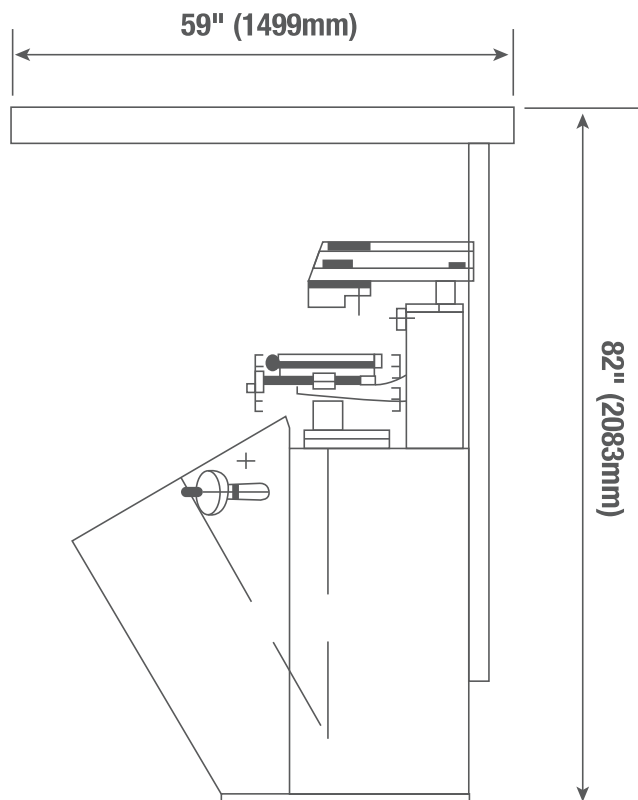
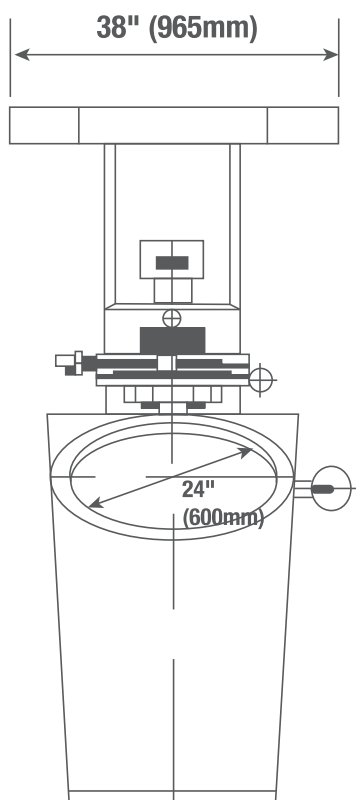
## FEATURES AND SPECIFICATIONS

- Available with MetLogix™ M1 tablet, M2 measuring software with touch screen PC, or Quadra-Chek® digital readout system
- Screen is angled 30° from horizontal for clear, easy viewing
- Projection lens turret with three lens capacity (lenses not included)
- Turret mounted condenser system complete with two lenses and yellow/green filter with provision to mount further accessories
- Linear encoder (glass scale) on both X and Y axes

## OPTIONS

- Choice of five fixed magnification lenses including 10x, 20x, 25x, 50x and 100x
- 5x fixed lens by special order
- Automatic edge detection
- Motorized X-Y axis
- Full canopy and curtains

## VF600 DIMENSIONS



## WEIGHT AND DIMENSIONS

	VF600
Gross Weight	903lbs 410kg
Net Weight	507lbs 230kg
Shipping Dimensions	60" x 47" x 81" 152 x 120 x 206cm



# HORIZONTAL FLOOR STANDING OPTICAL COMPARATOR

## HF600

Well known throughout the world for superior value and exceptional measuring performance across the full measuring range and at all magnifications, the HF600 sets the standard in all applications from the QC lab to the production floor. The HF600 comparator has a four-position lens turret for instant selection of optional magnification lenses. Inserting the optical OV2 Video Adapter in place of a projection lens converts the comparator into a video metrology system. Ideal for use over a broad spectrum of industries and applications, the HF600 is designed and built to satisfy the requirements of measuring small to large work pieces with total precision, ruggedness, and efficiency. The HF600 utilizes 2D measurement software for geometries like diameters, radius, angles, lines, points, and for skew correction. Advanced software can also provide many tools such as CAD file import, CAD data export for reverse engineering, standard and custom reports, and Ethernet networking.

### OPERATOR INTERFACE

Feature	MetLogix™		Quadra-Chek®	
	M2	M3	QC221	QC5200*
Mounted to comparator arm	x		x	
Color graphics	x	x		x
Touch screen operation	x	x		
MS Windows® operating system	x	x		
X-Y-Z axis digital readout	x	x	x	x
2D geometry software with skew	x	x	x	x
Optical edge detection option	x	x	x	x
Video edge detection option		x		x
CAD file import and export option		x		x
CNC drive option	x	x	x	x
Software developer	MetLogix™	MetLogix™	Metronics/Heidenhain	Metronics/Heidenhain

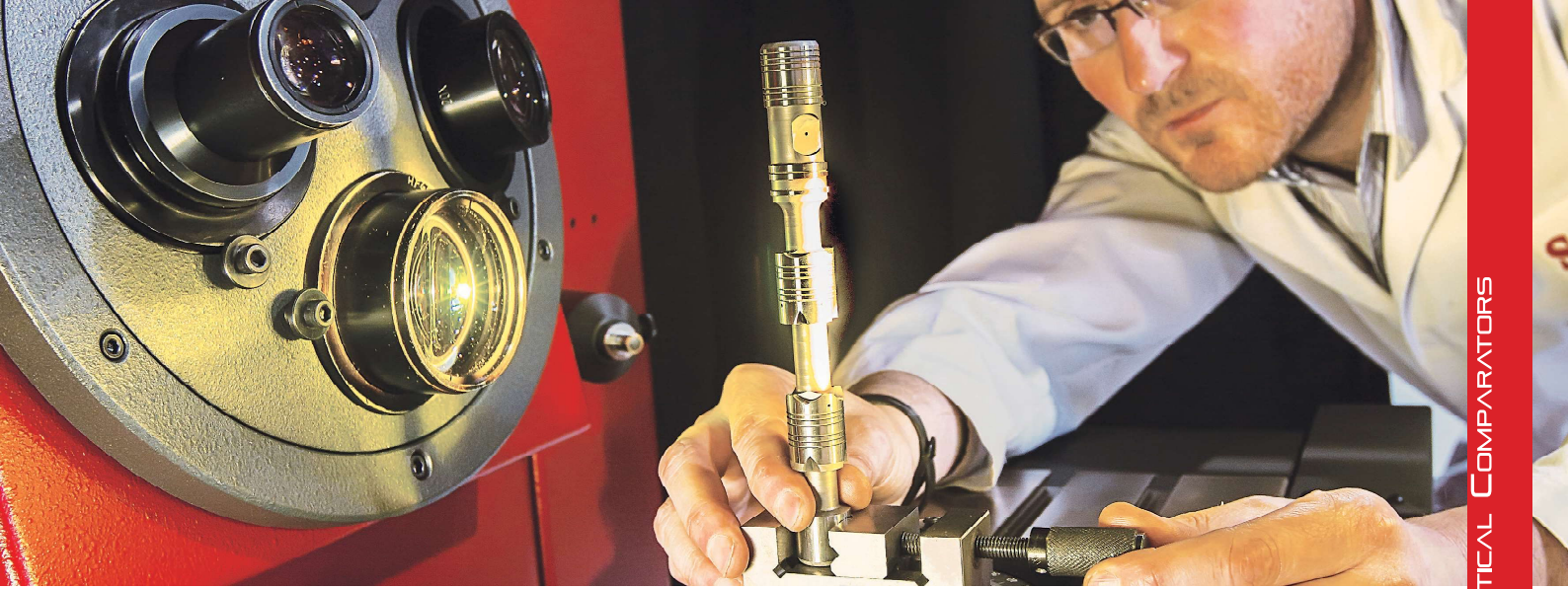
\*Available with either optical edge detection or video edge detection



### SPECIFICATIONS

HF600	
Horizontal Travel	12" (300mm)
Vertical Travel	8" (200mm)
Focus Travel	3" (75mm)
Top Plate*	25" x 9" (635 x 230mm)
Image	Erect and reversed

\*With machined slots for easy fixturing



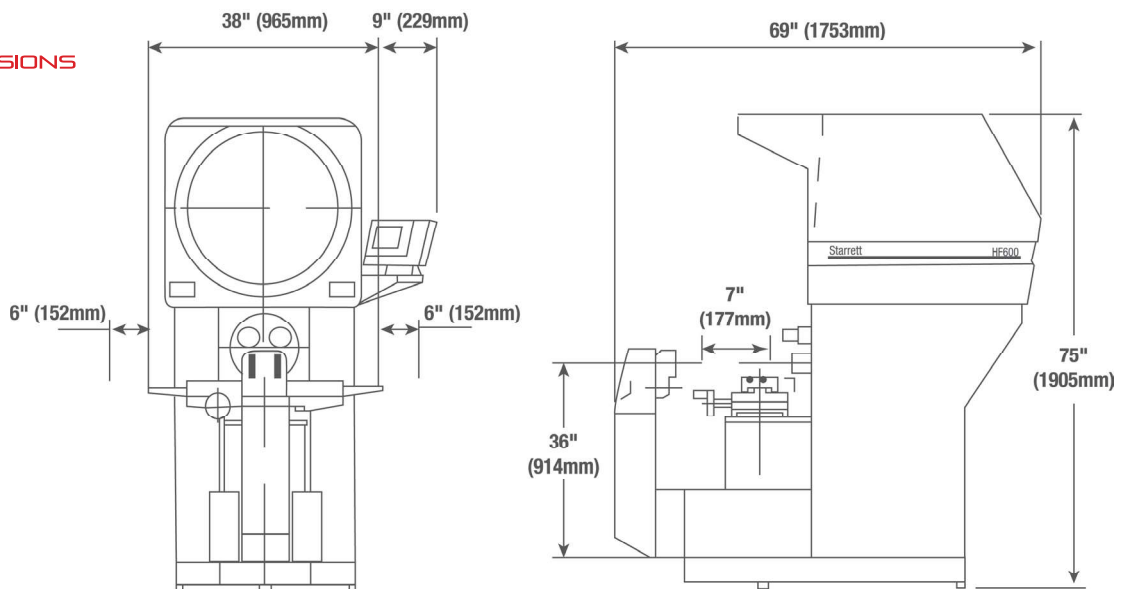
## FEATURES AND SPECIFICATIONS

- All metal construction with nickel plated stage tooling plate
- 24" (600mm) diameter screen
- Motorized X and Y axes standard
- Two-axis power drive via joystick and variable speed control for fine adjust
- Projection lens turret with four lens capacity (lenses not included)
- Turret mounted condenser system with yellow/green filter and provision to mount further accessories
- Linear encoder (glass scale) on both X and Y axes
- Halogen profile and surface illumination
- Digital protractor for accurate angle measurements (1' resolution) via Q-axis readout
- Available with MetLogix™ M1 tablet, M2 PC-based touch screen measuring software or Quadra-Chek® digital readout system

## OPTIONS

- Six interchangeable fixed magnification lenses including 10x, 20x, 25x, 31.25x, 50x and 100x
- Optional 5x fixed lens system available by special order
- Optional extended travel stage 20" x 8" (500 x 200mm) with 32" x 8" (800 x 200mm) top plate
- Automatic optical edge detection
- Automatic video edge detection (available only with OV2 and TOV2 video cameras)
- OV2 Video Camera with 6.5:1 zoom lens
- TOV2 Telecentric Video Camera with choice of 0.16x, 0.3x, or 0.5x fixed magnification lens
- Fully automatic CNC controls
- Swing-away lamp house
- Extensive line of accessories
- Full canopy and curtains

## HF600 DIMENSIONS



## WEIGHT AND DIMENSIONS

	HF600
Net Weight	1340lbs 610kg
Gross Weight	1500lbs 680kg
Crated Dimensions	77" x 46" x 83" 196 x 117 x 210cm



# HORIZONTAL FLOOR STANDING OPTICAL COMPARATOR

## HF750

Utilizing the same exemplary build standards as the HF600, the HF750 super capacity optical comparator delivers benefits from an even larger 30" (762mm) screen, setting a new standard for clarity and brightness. Ideal for use over a broad spectrum of industries and applications, the HF750 is designed and built to satisfy the requirements of measuring small to large work pieces with total precision, ruggedness, and efficiency. The geometric software measures diameter, radius, angle, line and point features, plus part skewing for faster setup. The HF750 is available with optical edge detection or video edge detection with advanced software and OV2 or TOV2 camera options.

### OPERATOR INTERFACE

Feature	MetLogix™		Quadra-Chek®	
	M2	M3	QC221	QC5200*
Mounted to comparator arm	x		x	
Color graphics	x	x		x
Touch screen operation	x	x		
MS Windows® operating system	x	x		
X-Y-Q axis digital readout	x	x	x	x
2D geometry software with skew	x	x	x	x
Optical edge detection option	x	x	x	x
Video edge detection		x		x
CAD file import and export option		x		x
CNC drive option	x	x	x	x
Software developer	MetLogix™	MetLogix™	Metronics/Heidenhain	Metronics/Heidenhain

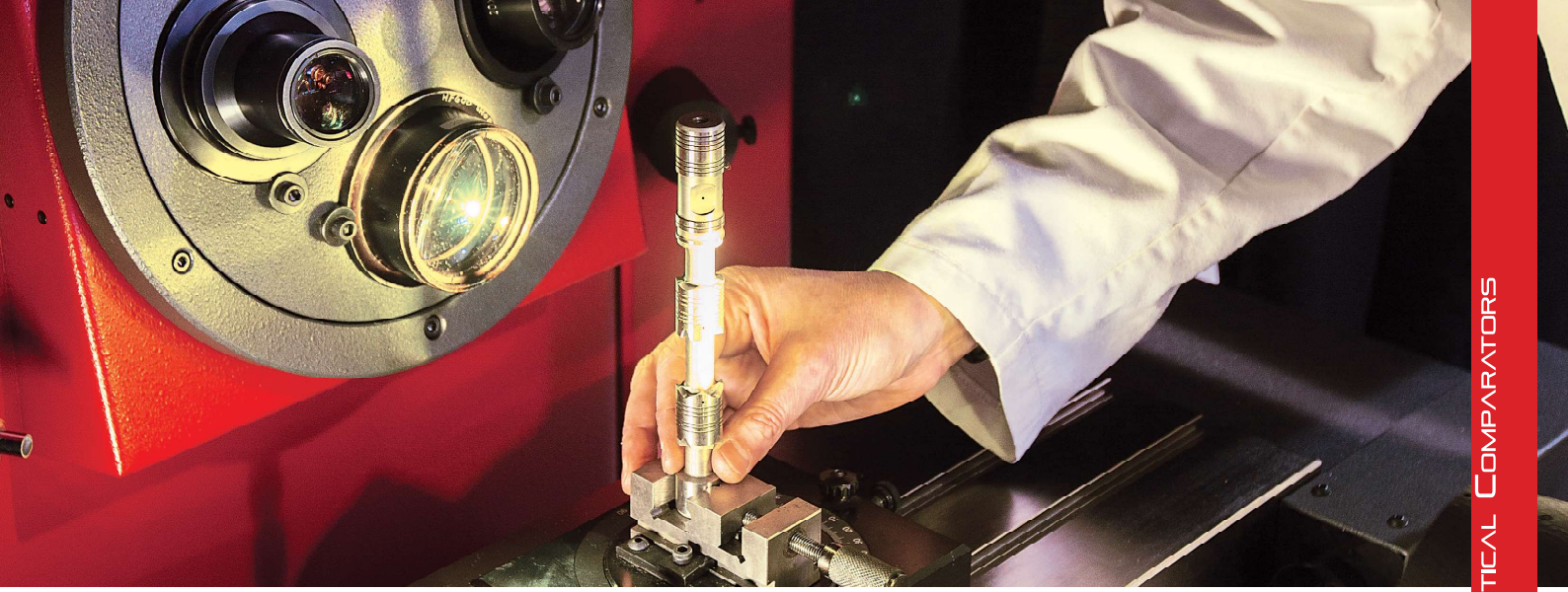
\*Available with either optical edge detection or video edge detection



### SPECIFICATIONS

HF750	
Horizontal Travel	12" (300mm)
Vertical Travel	8" (200mm)
Focus Travel	3" (75mm)
Top Plate*	25" x 9" (635 x 230mm)
Image	Erect and reversed

\*With machined slots for easy fixturing



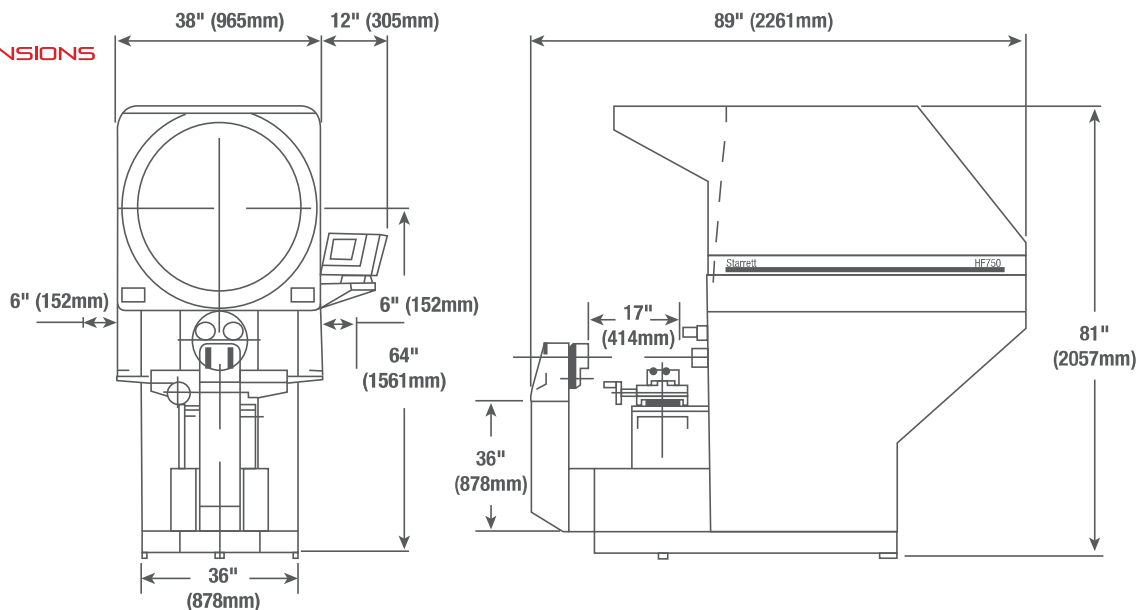
## FEATURES AND SPECIFICATIONS

- All metal construction with nickel plated stage tooling plate
- 30" (750mm) diameter screen
- Motorized X and Y axes standard
- Two-axis power drive via joystick and variable speed control for fine adjust
- Projection lens turret with three lens capacity (lenses not included)
- Turret mounted condenser system with yellow/green filter and provision to mount further accessories
- Linear encoder (glass scale) on both X and Y axes
- Halogen profile and surface illumination
- Digital protractor for accurate angle measurements (1' resolution) via Q-axis readout
- Available with MetLogix™ M2 or M3 PC-based touch screen measuring software or Quadra-Chek® digital readout system

## OPTIONS

- Six interchangeable fixed magnification lenses including 10x, 20x, 25x, 31.25x, 50x and 100x
- Optional 5x fixed lens system available by special order
- Extended travel stage 20" x 8" (500 x 200mm) with 32" x 8" (800 x 200mm) top plate
- Automatic optical edge detection
- Automatic video edge detection (available only with OV2 or TOV2 video cameras)
- OV2 Video Camera with 6.5:1 zoom lens
- TOV2 Telecentric Video Camera with choice of 0.16x, 0.3x, or 0.5x fixed magnification lens
- Fully automatic CNC controls
- Swing-away lamp house
- Extensive line of accessories
- Full canopy and curtains

## HF750 DIMENSIONS



## WEIGHT AND DIMENSIONS

	HF750
Net Weight	1660lbs 752kg
Gross Weight	1800lbs 816kg
Crated Dimensions	97" x 48" x 91" 246 x 122 x 231cm



## SIDE BED OPTICAL COMPARATORS

### HS600

The HS600 floor-standing horizontal optical comparator has all the same features as the HF600, except it has the screen position set to the side of the workstage area allowing close, comfortable and unrestricted access to the viewing and control area. A time tested, cost-effective solution for non-contact measurement. At the heart of these systems are precision optics, superb lighting, and a highly accurate workstage that combine to ensure bright, sharp images and exceptional accuracy. The HS600 is simple to use, yet has excellent capacity and performance to satisfy an exceptionally wide range of dimensional inspection applications and complex measuring requirements.

#### OPERATOR INTERFACE

Feature	MetLogix™		Quadra-Chek®	
	M2	M3	QC221	QC5200*
Mounted to comparator arm	x		x	
Color graphics	x	x		x
Touch screen operation	x	x		x
MS Windows® operating system	x	x		
X-Y-Q axis digital readout	x	x	x	x
X-Y axis digital readout				
2D geometry software with skew	x	x	x	x
Optical edge detection option	x	x	x	x
Video edge detection		x		x
CAD file import and export option		x		
CNC drive option	x	x	x	x
Software developer	MetLogix™	MetLogix™	Metronics/Heidenhain	Metronics/Heidenhain

\*Available with either optical edge detection or video edge detection



#### SPECIFICATIONS

HF750	
Horizontal Travel	12" (300mm)
Vertical Travel	8" (200mm)
Focus Travel	3" (75mm)
Top Plate	25" x 9" (635 x 230mm)
Image	Erect and reversed

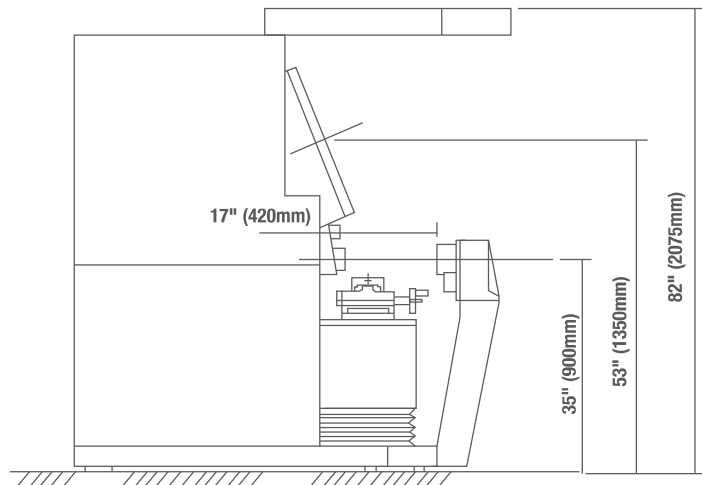
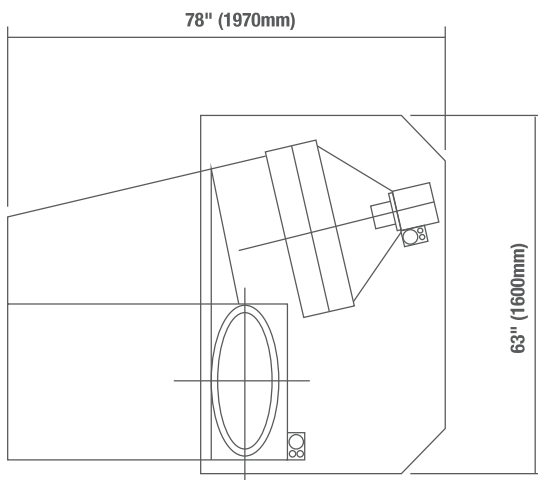
## FEATURES AND SPECIFICATIONS

- Accommodates components up to 330lbs (150kg)
- 24" (600mm) diameter screen
- Motorized X and Y axes standard
- Projection lens turret with four lens capacity (lenses not included)
- Turret mounted condenser system complete with two lenses and yellow/green filter with provision to mount further accessories
- Linear encoder (glass scale) on both X and Y axes
- Halogen profile and surface illumination
- Digital protractor for accurate angle measurements (1' resolution) via Q-axis readout
- Available with MetLogix™ M2 and M3 PC-based touch screen measuring software or Quadra-Chek® digital readout systems
- Two-axis power drive via joystick and variable speed control for fine adjust

## OPTIONS

- Choice of six fixed magnification lenses including 10x, 20x, 25x, 31.25x, 50x and 100x
- OV2 video zoom lens
- TOV2 Video Lens Assembly with choice of 0.16x, 0.3x or 0.5x fixed magnification lenses
- Automatic optical edge detection
- Automatic video edge detection (available with OV2 or TOV2 video cameras)
- Fully automatic CNC controls
- Full canopy and curtains

## HS600 DIMENSIONS



## WEIGHT AND DIMENSIONS

	HS600
Gross Weight	2646lbs 1200kg
Net Weight	2315lbs 1050kg
Dimensions (boxed)	83" x 89" x 93" 210 x 255 x 235cm



## SIDE BED OPTICAL COMPARATORS

### HS750

The HS750 floor-standing horizontal optical comparator has all the same features as the HF750 except that it has the screen position set to the side of the workstage area allowing close, comfortable and unrestricted access to the viewing and control area. At the heart of these systems are precision optics, superb lighting and a highly accurate workstage that combine to ensure bright, sharp images and exceptional accuracy. A time tested, cost-effective solution for non-contact measurement, the HS750 is simple to use, yet offers excellent capacity and performance to satisfy an exceptionally wide range of dimensional inspection applications and complex measuring requirements.

#### OPERATOR INTERFACE

Feature	MetLogix™		Quadra-Chek®	
	M2	M3	QC221	QC5200*
Mounted to comparator arm	x	x	x	
Color graphics	x	x		x
Touch screen operation	x	x		
MS Windows® operating system	x	x		
X-Y-Z axis digital readout	x	x	x	x
2D geometry software with skew	x	x	x	x
Optical edge detection option	x	x	x	x
Video edge detection option		x		x
CAD file import and export option		x		
CNC drive option	x	x	x	x
Software developer	MetLogix™	MetLogix™	Metronics/Heidenhain	Metronics/Heidenhain

\*Available with either optical edge detection or video edge detection



#### SPECIFICATIONS

HF750	
Horizontal Travel	12" (300mm)
Vertical Travel	8" (200mm)
Focus Travel	3" (75mm)
Top Plate*	25" x 9" (635 x 230mm)
Image	Erect and reversed

\*With machined slots for easy fixturing

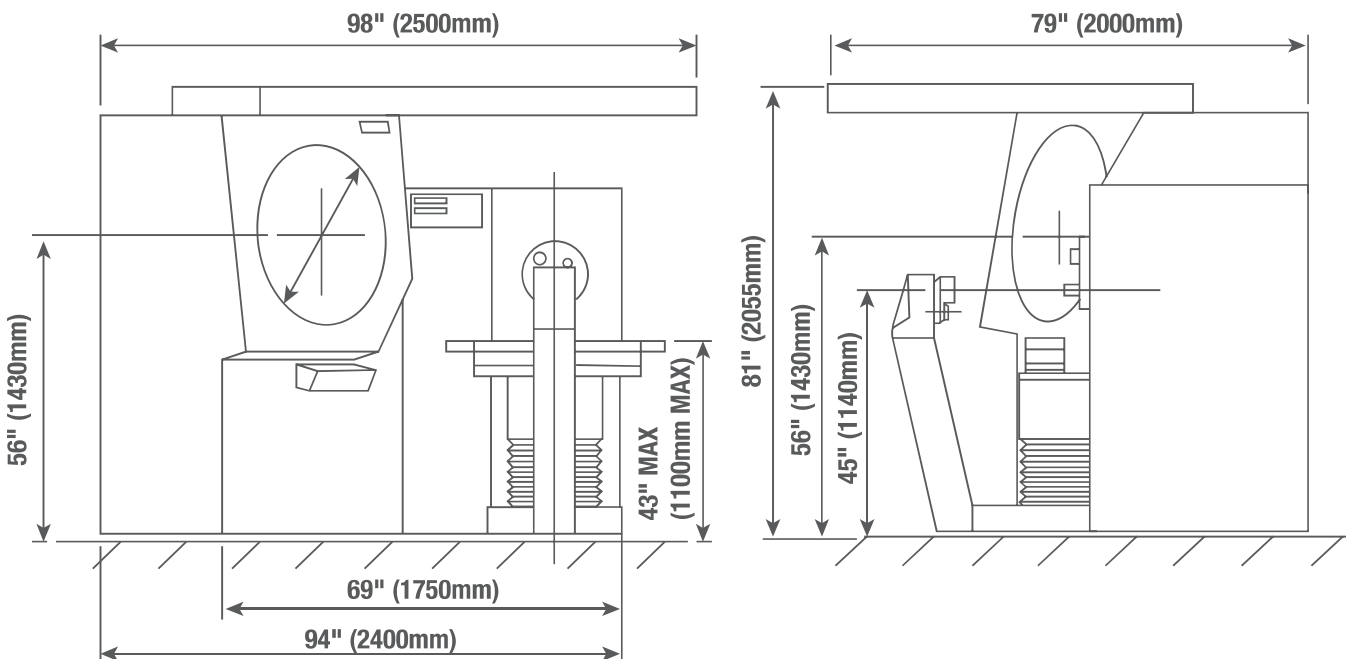
## FEATURES AND SPECIFICATIONS

- All metal construction
- Large 30" (750mm) diameter screen provides extensive field of view giving the user more component detail on the screen
- Side-bed design gives the operator uninterrupted access to the screen and working area
- Motorized X and Y axes standard
- Linear encoder (glass scale) on both X and Y axes
- Projection lens turret with three lens capacity (lenses not included)
- Turret mounted condenser system with yellow/green filter and provision to mount further accessories
- Halogen profile and surface illumination
- Digital protractor for accurate angle measurements (1' resolution) via Q-axis readout
- Available with MetLogix™ M2 or M3 PC-based touch screen measuring software or Quadra-Chek® digital readout system

## OPTIONS

- Six interchangeable fixed magnification lenses including 10x, 20x, 25x, 31.25x, 50x and 100x
- Optional 5x fixed lens system available by special order
- Extended travel stage 20" x 8" (500 x 200mm) with 32" x 8" (800 x 200mm) top plate
- Automatic optical edge detection
- Automatic video edge detection (available only with OV2 or TOV2 video cameras)
- OV2 Video Camera with 6.5:1 zoom lens
- TOV2 Telecentric Video Camera with choice of 0.16x, 0.3x, or 0.5x fixed magnification lens
- Fully automatic CNC controls
- Swing-away lamp house
- Extensive line of accessories
- Full canopy and curtains

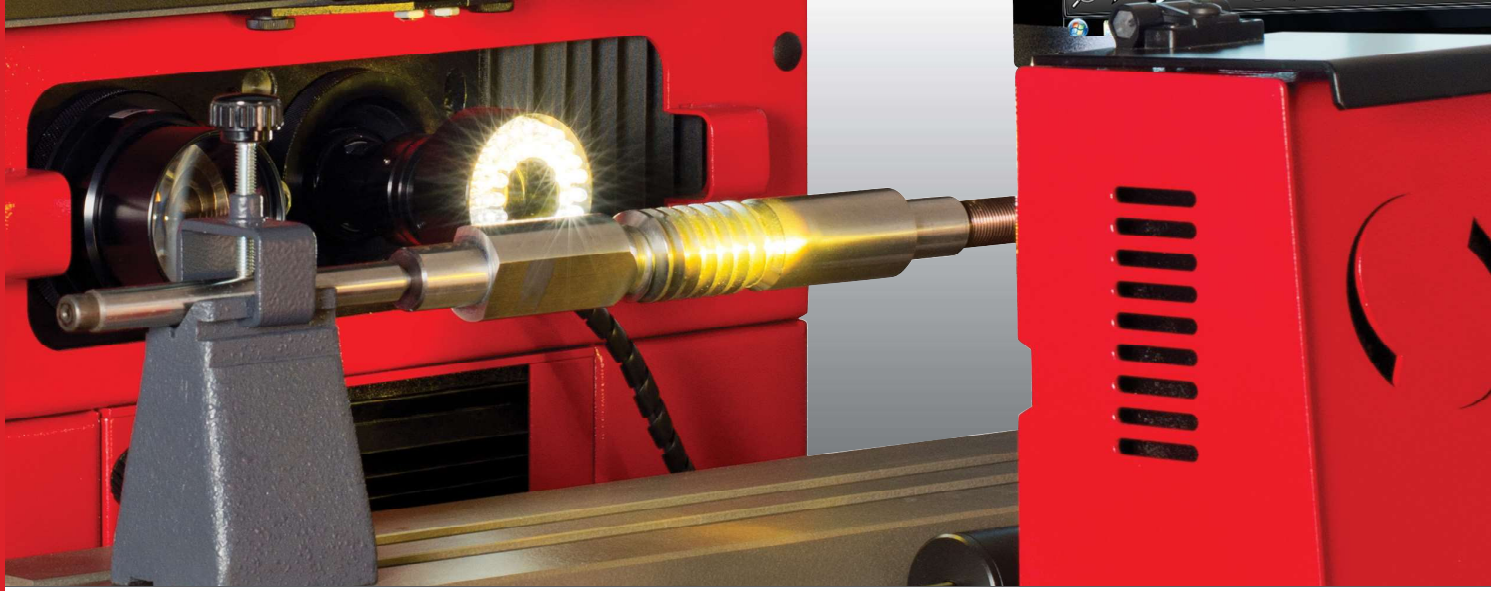
## HS750 DIMENSIONS



## WEIGHT AND DIMENSIONS

	HS750
Gross Weight	3307lbs 1500kg
Net Weight	2932lbs 1330kg
Dimensions (boxed)	117" x 89" x 93" 297 x 225 x 235cm





## OV2™ OPTICAL COMPARATOR VIDEO ADAPTER

The OV2 is a special zoom lens and video camera adapter that can be interchanged with the fixed magnification lens on Starrett Optical Comparators. Combined with MetLogix™ M3 software and touch screen PC, the result is a low cost video measuring system, expanding the versatility of your optical comparator! The OV2 is available as an option with new Starrett comparators and as an easy-to-install field retrofit. When used with the dual-lens HD400, the OV2 allows immediate access to both Video and Optical measurement without changing the part setup.

### FEATURES AND SPECIFICATIONS

- Interchangeable bayonet mount lens with 6.5:1 zoom lens and video camera creates a video measuring system
- Changeover between normal optical mode and OV2 is easy and fast
- Lens locks into comparator body and is pre-aligned
- Up to 1.25" (32mm) of working distance allows maximum stage travel utilization
- Video magnifications up to 240x
- Utilizes MetLogix™ M3 software and an all-in-one PC for video display and touch screen control
- Maximizes existing investment to provide a low cost entry into video measurement technology
- Available for other makes of optical comparators, please call for more information



# TOV2 OPTICAL COMPARATOR TELECENTRIC VIDEO ADAPTER

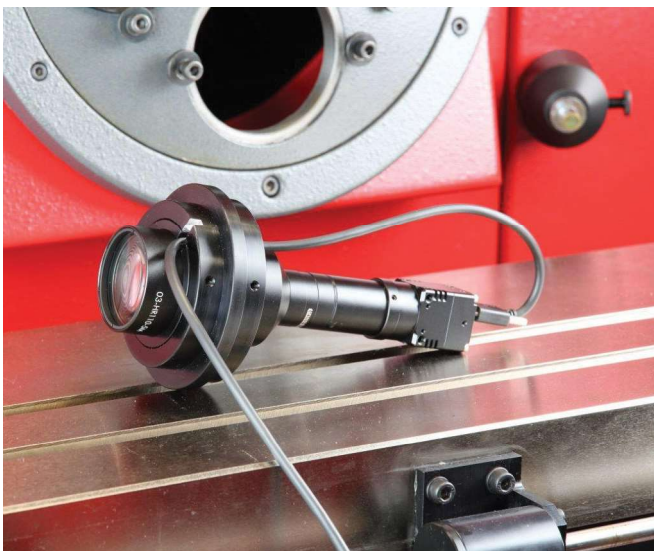
The TOV2 telecentric lens and video camera can be interchanged with the fixed magnification lenses on Starrett Optical Comparators. The TOV2 is available with a choice of 0.16x, 0.3x or 0.5x telecentric lenses as an option with new Starrett comparators and an easy-to-install field retrofit.

## FEATURES AND SPECIFICATIONS

- Replaces bayonet mount comparator lens with telecentric lens and video camera to create a video measuring system
- Changeover between normal optical mode and TOV2 is easy and fast
- Lens locks into comparator body and is pre-aligned
- Utilizes MetLogix™ M3 measuring software and a PC for video display and touch screen control
- Maximizes existing investment to provide a low cost entry into video measurement technology
- Offers a choice of .16x, .3x or .6x telecentric magnification lenses
- Available for other makes of optical comparators, please call for more information



M3 software display



## SPECIFICATIONS AND OPTIONS

Model	HE400	HB400	HD400	VB300	VB400
Bench Top System	X	X	X	X	X
Floor-Standing System	-	-	-	-	-
Part View Orientation	Horizontal	Horizontal	Horizontal	Vertical	Vertical
Side Bed Version	-	-	-	-	-
Screen Diameter (in)	16"	16"	16"	12"	16"
Screen Diameter (mm)	400mm	400mm	400mm	300mm	400mm
X-Y Measuring Range (in)	10" x 4"	12" (16" optional) x 6"	16" x 6"	4" x 4"	8" x 4"
X-Y Measuring Range (mm)	250 x 100mm	300 (400mm optional) x 150mm	400 x 150mm	100mm x 100mm	200 x 100mm
Linear Glass Scale Encoder on X and Y Axis	Standard	Standard	Standard	Standard	Standard
Motorized X-Y Axis	-	Optional	Optional	-	-
CNC Control	-	Optional	Optional	-	-
Focus Range (in)	1.2"	2"	2"	3.5"	4"
Focus Range (mm)	30mm	50mm	50mm	90mm	100mm
Work Stage (in)	18.75" x 4.75"	21.25" x 5"	21.25" x 5"	8.8" x 8.8"	16" x 19"
Work Stage (mm)	475 x 120mm	540 x 130mm	540 x 130mm	225mm x 225mm	400 x 225mm
Load Capacity with Negligible Deflection (lbs)	15lbs	22lbs	22lbs	11lbs	22lbs
Load Capacity Maximum (lbs)	55lbs	110lbs	110lbs	15lbs	50lbs
Angular Measurement Resolution	1'	1'	1'	1'	1'
Profile Illumination	Standard	Standard	Standard	Standard	Standard
Surface Illumination	Standard	Standard	Standard	Standard	Standard
Quick Change Lens Mount (lenses not included)	Single	Single	Dual	Single	Single
Collimating Condenser with Yellow/Green Filter	Standard	Standard	Standard	Standard	Standard
Control System Software	QC100, QC200, M1, M2	QC100/QC200, QC5200, M1, M2, M3	QC200, QC5200, M1, M2, M3	LED Readout, QC100, QC200, M1, M2	QC100, QC200, M1, M2
Display (control system dependent)	QC DRO or 15.6" Touchscreen PC, M1 with 7" tablet	QC DRO, 15.6" or 21" Touchscreen PC or 24" Monitor, M1 with 7" tablet	QC DRO, 15.6" or 21" Touchscreen PC or 24" Monitor, M1 with 7" tablet	QC DRO or 15.6" Touchscreen PC, M1 with 7" tablet	QC DRO or 15.6" Touchscreen PC, M1 with 7" tablet
Optical Edge Detection	Optional	Optional	Optional	Optional	Optional
Digital Video Camera System	-	Optional	Optional	-	-
Lenses - Screen Magnification (one required, not included)	10x, 20x, 25x, 31.25x, 50x, 100x	10x, 20x, 25x, 31.25x, 50x, 100x	10x, 20x, 25x, 31.25x, 50x, 100x	10x, 20x, 25x, 50x, 100x	10x, 20x, 25x, 50x, 100x
Iris Diaphragm	Optional	Optional	Optional	-	-
Precision Rotary Vise	Optional	Optional	Optional	-	-
Vee Block on Rotary Base	Optional	Optional	Optional	-	-
Precision Fixed Vise	Optional	Optional	Optional	-	-
Precision Centers and Veers	Optional	Optional	Optional	Optional	Optional
Helix Center Support System	-	-	-	-	Optional
Precision Rotary Work Stage	-	-	-	-	Optional
Glass Plate Work Holder	Optional	Optional	Optional	-	-
Field of View Diameter (in)	1.6", .8", .6", .5", .3", .15"	1.6", .8", .6", .5", .3", .15"	1.6", .8", .6", .5", .3", .15"	1.6", .8", .6", .3"	1.6", .8", .6", .3", .15"
Field of View Diameter (mm)	40mm, 20mm, 16mm, 13mm, 8mm, 4mm	40mm, 20mm, 16mm, 13mm, 8mm, 4mm	40mm, 20mm, 16mm, 13mm, 8mm, 4mm	40mm, 20mm, 16mm, 8mm	40mm, 20mm, 16mm, 8mm, 4mm
Working Distance (in)	3.1", 3", 2.5", 2.2", 2", 1.5"	3.1", 3", 2.5", 2.2", 2", 1.5"	3.1", 3", 2.5", 2.2", 2", 1.5"	3.1", 3", 2.5", 2"	3.1", 3", 2.5", 2", 1.5"
Working Distance (mm)	80mm, 76mm, 62mm, 57mm, 50mm, 41mm	80mm, 76mm, 62mm, 57mm, 50mm, 41mm	80mm, 76mm, 62mm, 57mm, 50mm, 41mm	80mm, 76mm, 62mm, 50mm	80mm, 76mm, 62mm, 50mm, 41mm
Cabinet Stand 32"	Optional	Optional	Optional	-	-
Cabinet Stand 23"	Optional	Optional	Optional	Optional	Optional
Canopy and Curtains	Optional	Optional	Optional	-	Optional



VF600	HF600	HF750	HS600	HS750
-	-	-	-	-
X	X	X	X	X
Vertical	Horizontal	Horizontal	Horizontal	Horizontal
-	-	-	Standard	Standard
24"	24"	30"	24"	30"
600mm	600mm	750mm	600mm	750mm
8" x 4"	12" (20" optional) x 8"	12" (20" optional) x 8"	12" (20" optional) x 8"	12" (20" optional) x 8"
200 x 100mm	300 (500mm optional) x 200mm	300 (500mm) x 200mm	300 (500mm) x 200mm	300 (500mm optional) x 200mm
Standard	Standard	Standard	Standard	Standard
Optional	Standard	Standard	Standard	Standard
-	Optional	Optional	Optional	Standard
4"	3"	3"	3"	3"
100mm	75mm	75mm	75mm	75mm
16" x 9"	25" x 9" (Optional 32" x 8")	25" x 9" (Optional 32" x 8")	25" x 9" (Optional 32" x 8")	25" x 9" (Optional 32" x 8")
400 x 225mm	630 x 230mm	630 x 230mm	630 x 230mm	630 x 230mm
22lbs	110lbs	110lbs	110lbs	110lbs
66lbs	330lbs	330lbs	330lbs	330lbs
1'	1'	1'	1'	1'
Standard	Standard	Standard	Standard	Standard
Standard	Standard	Standard	Standard	Standard
3 Lens Turret	4 Lens Turret	3 Lens Turret	4 Lens Turret	3 Lens Turret
Standard	Standard	Standard	Standard	Standard
QC200, QC5200, M2, M3	QC200, QC5200, M2, M3	QC200, QC5200, M2, M3	QC200, QC5200, M2, M3	QC200, QC5200, M2, M3
QC DRO 15.6" or 21" Touchscreen PC or 24" Monitor	QC DRO 15.6" or 21" Touchscreen PC or 24" Monitor	QC DRO 15.6" or 21" PC Touchscreen or 24" Monitor	QC DRO, 15.6" or 21" Touchscreen PC or 24" Monitor	QC DRO, 15.6" or 21" Touchscreen PC or 24" Monitor
Optional	Optional	Optional	Optional	Optional
-	Optional	Optional	Optional	Optional
10x, 20x, 25x, 50x, 100x	10x, 20x, 25x, 50x, 100x	10x, 20x, 25x, 50x, 100x	10x, 20x, 25x, 50x, 100x	10x, 20x, 25x, 50x, 100x
-	Optional	Optional	Optional	Optional
-	Optional	Optional	Optional	Optional
-	Optional	Optional	Optional	Optional
-	Optional	Optional	Optional	Optional
Optional	Optional	Optional	Optional	Optional
Optional	-	-	-	-
Optional	-	-	-	-
-	Optional	Optional	Optional	Optional
2.3", 1.2", .9", .5", .2"	2.3", 1.2", .9", .5", .2"	3", 1.5", 1.2", .6", .3"	2.3", 1.2", .9", .5", .2"	3", 1.5", 1.2", .6", .3"
60mm, 30mm, 24mm, 12mm, 6mm	60mm, 30mm, 24mm, 12mm, 6mm	75mm, 37.5mm, 30mm, 15mm, 7.5mm	60mm, 30mm, 24mm, 12mm, 6mm	75mm, 37.5mm, 30mm, 15mm, 7.5mm
5.4", 5", 4", 3.5" 1.7"	5.4", 5", 4", 3.5" 1.7"	6", 4", 3.6", 2.3", 1.9"	5.4", 5", 4", 3.5" 1.7"	6", 4", 3.6", 2.3", 1.9"
138mm, 127mm, 103mm, 88mm, 44mm	138mm, 127mm, 103mm, 88mm, 44mm	151mm, 101mm, 92mm, 60mm, 48mm	138mm, 127mm, 103mm, 88mm, 44mm	151mm, 101mm, 92mm, 60mm, 48mm
-	-	-	-	-
-	-	-	-	-
Optional	Optional	Optional	Optional	Option

## ACCESSORIES

Starrett offers a full range of accessories and purpose-built cabinet stands designed for our optical comparator systems to ensure efficient system setup for a broad range of applications.

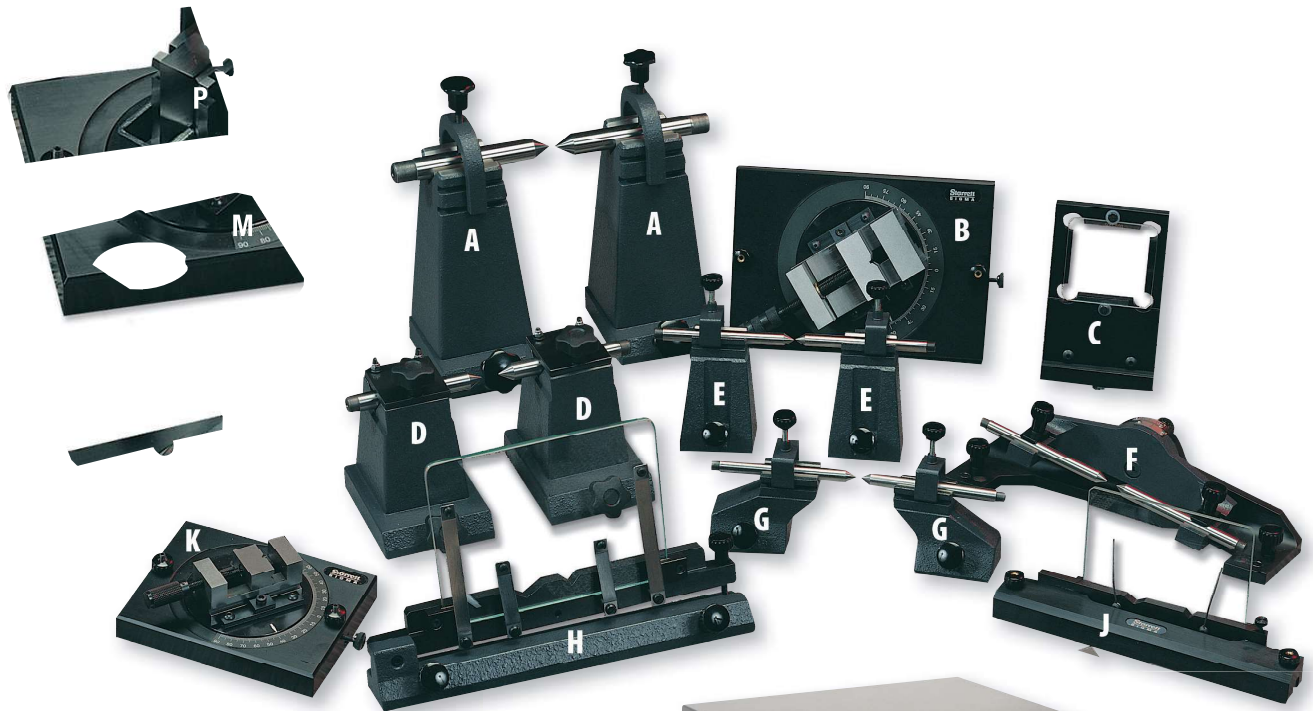


Photo Key	Part No.	Description	For Models
A	OCN8	Large Centers and Vees	
B	ORV2	2-1/32" Capacity Rotary Vise	HF600, HF750
C	4U000 OGH1 OGH2	Magnification Checking Graticule	HE/HB/HD400 and VB400 HF600 HF750
D	OCN7	Small Centers and Vees	HF600, HF750
E	4G000 7P000	Centers and Vees	HB350 HE/HB/HD400
F	9W000 3V000	Helix Center Support Fixture	VB300
G	6H000	Centers and Vees	VB400, VF600
H	OVH1	Vertical Glass Plate Holder	HF600, HF750
J	7U000	Vertical Glass Plate Holder	HE/HB/HD400
K	4H003	Rotary Vise with 1-1/4" Capacity	HE/HB/HD400 (also larger horizontal comparators)
M	6U003	Rotary Work-stage	VB400, VF600 for use on 200mm x 100mm workstage
N	4H002	Fixed Position Vise with 1-1/4" Capacity	HE/HB/HD400 (also larger horizontal comparators)
P	4H004	Universal Vee Block on Rotary Base	
S		32" Cabinet Stand 23" Cabinet Stand	HE400, HB400, HD400, VB300, VB400
T*		Canopy and Curtains designed to be used with 23" or 32" cabinet stand	HE400, HB400, HD400, VB400

\*Product not shown







SOFTWARE



# METLOGIX™ SOFTWARE

## M1 AND M2

### FOR OPTICAL COMPARATORS

Graphics rich display, large icon buttons, and intuitive operation. Coordinate display for X and Y linear axes and Q angular values for screen rotation. Easy part alignment and datum function.



## FEATURES

- Clean and simple touchscreen interface with large icon buttons and intuitive operation
- Graphics-rich display providing instant information on feature form, tolerances, and measurement data
- Coordinate display for X and Y linear axes and Q angular values for screen rotation
- Easy part alignment and datum functions
- Measure and tolerance these geometric features: point, line, angle, distance, radius, diameter
- As you measure, a part view is created in the feature view. Constructions between features such as distances and bolt hole pattern can be done by simple selections from the part view.
- For repetitive part measurement, create a part program that will visually guide operators through part measurement
- Available optical edge detection provides better throughput and removes operator subjectivity
- Four different report forms can be printed or exported to Microsoft Excel, text files, or to an SPC program
- Mounts and displays in either vertical or horizontal position
- M2 utilize a Windows® 7 Professional-based operating system enables flexible data export and interface capability with Windows®
- Fast, easy connection to printers and networks
- M1 utilizes an Android operating system and a Bluetooth connection to the host Optical Comparator

## M1, M2 AND M3

MetLogix™ control software provides a broad range of powerful, user-friendly functions on a compact, icon-based touchscreen interface in place of the traditional control.

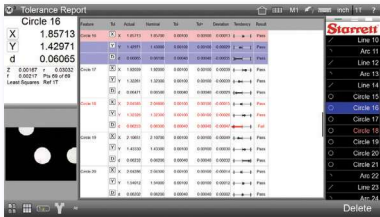
	MetLogix™ M1	MetLogix™ M2	MetLogix™ M3
Mounted to comparator arm	x	x	
Color graphics	x	x	x
Touch-screen operation	x	x	x
MS Windows® operating system		x	x
X-Y-Q (angle) measurements	x	x	x
2D geometry software with skew	x	x	x
Optical edge detection option	x	x	x
Video edge detection option			x
CAD file import and export option		x	x
CNC drive option		x	x

FOR VISION SYSTEMS

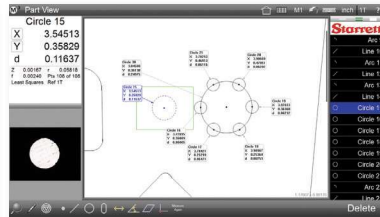
Multi-touch software control that can pan and zoom with pinch, swipe, or touch. Works with active part views and live video feeds (or use the conventional mouse interface). Custom "Eye Measure" probe captures complex edges generated by a finger path drawn on the touch screen. Measure Logic probe intelligence provides instant feature determination and measurement with a single touch.



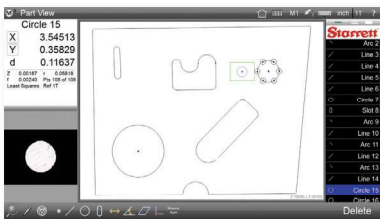
Intuitive graphic menu



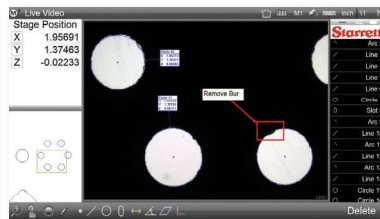
Display flexibility or export the measurement report



Graphic window with selectable Features and notes



Graphical window with the selected data points



Live video image with data from selected points

FEATURES

- DXF CAD file import for comparing parts being inspected to the actual design file; no need for cumbersome Mylar overlays
- "Vtouch" Probe has video touch probe functionality – just click for simple acquisition of points on a feature's edge
- Part View can generate distance and tangent lines from within the graphical part view. The "Gesture Menu" can be used for feature creation and manipulation tools.
- "Quick Annotate" allows data on several features to be displayed simultaneously with smart marquee feature selection
- Application of universal tolerance value entry according to feature resolution groupings
- Feature Detail Graphics: Individual feature views display point cloud distributions, nominal deviations, and tolerance results. Scroll through Actual, Nominal, Tolerance, Deviation and Data Fit Type information.
- Simple machine/camera calibration with popular machine and video correction methods
- Windows® 7 Professional-based, globally recognized OS for flexible data exporting and interface with Windows® applications



Software MetLogix™ M3 with touch touchscreen interface



## QUADRA-CHEK<sup>®</sup> SOFTWARE

Modern metrology is a complex sequence of measuring, recording, analyzing and reporting dimensional data. The conceptual model underlying the Quadra-Chek<sup>®</sup> digital readout design organizes the work-flow to support operators at every stage of the measurement process.

### QC100

- Perform 2 and 3 axis measurements at very high levels of precision and accuracy
- Measurements viewed on the front panel LCD can be transmitted to a PC over a standard serial port connection, or to a printer over a parallel or serial port



QC100

### QC200

Metrology DRO requires a video monitor display and cross-hair generator in vision configuration. QC200 is a time-saving measurement tool with patented Measure Magic<sup>®</sup> technology. Ideal for measuring 2D features on Optical Comparators and Manual Vision Machines.

- Inch/metric conversion, toggle between incremental/absolute and simple zero reset
- Skew function for ease of part alignment
- Integrated geometric tolerancing allowing for pass/fail measurements
- Simple part programming with measure guide
- USB and RS232 Interface
- Linear and segmented linear error correction
- Intuitive displays
- Crisp, clear, bright black and white LCD display
- Optional optical edge for comparators



QC200





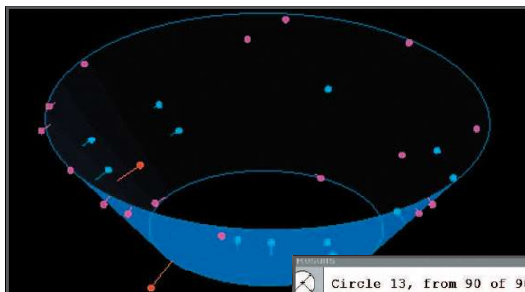
## QC5200

Metrology software is a Windows® 7 Professional 32-bit based PC inspection system for video measuring machines.

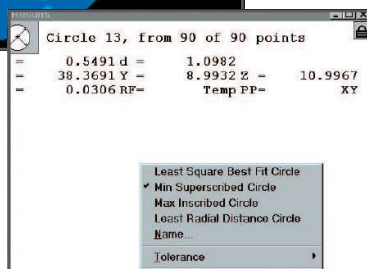
The QC5200 supports a wide range of industries that require precise measurement and inspection of 2D parts using a single sensor. This product features an intuitive user interface and simple, meaningful visual displays. The design reflects a deep understanding of the user's needs along with a process model that supports the operator at every stage in the measurement process.

### FEATURES

- Powerful yet intuitive video edge detection tools
- Auto-Focus
- "X-Y" 2D measurements with optional "Z" axis for height measurements
- Image capture with drag and drop data reporting
- Image processing tools
- Continuous edge mode
- Patented Measure Magic technology
- Alternative algorithms
- Auto program from CAD files
- Pattern recognition
- Integrated runs database
- Geometric tolerancing
- Advanced calculation
- Data cloud analysis



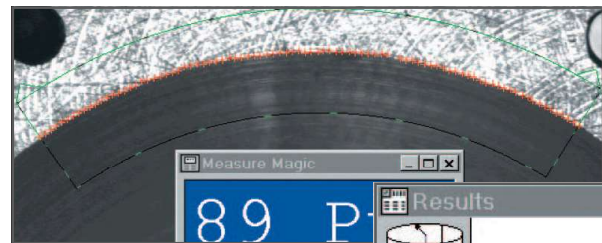
Data Cloud Alternate fits



## QC5300

Metrology software picks up where the QC5200 leaves off. This product offers multi-axis dimensional measurement of 2D and 3D parts. The QC5300 integrates an innovative user interface, state of the art ergonomics, powerful data import, export and data analysis tools.

- 3D measurement set
- 3D offset alignments
- Customizable screen layouts
- Multiple reference frames
- 3D part view
- Renishaw touch probe interface
- Optional laser sensor
- Vector probing
- Multiple language support
- 3D Measure Magic technology
- Advanced calculations
- 3D data clouds
- Alternate algorithms
- Drag and drop report generator
- Data export to a wide variety of applications



Measure Magic

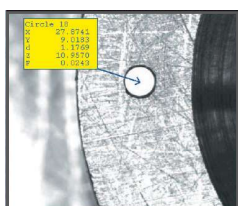
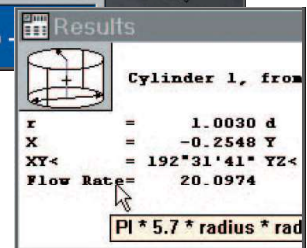
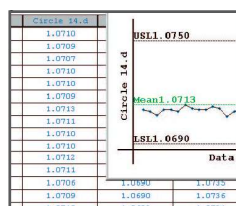


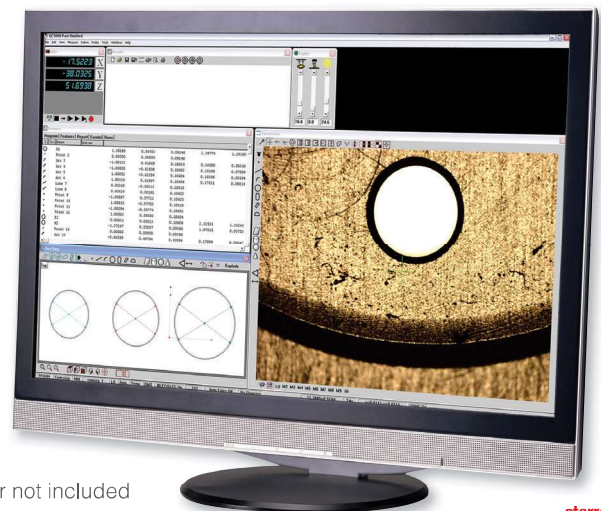
Image View

MMC Tolerance Results			
Position			
	Nominal	Actual	Error
X	22.5620	22.5618	
Y	-0.0700	-0.0698	0.0006
Z	10.9466	10.9466	
Size			
	Nominal	Actual	Deviation
D	1.0660	1.0657	-0.0003

Tolerance



Integrated Database

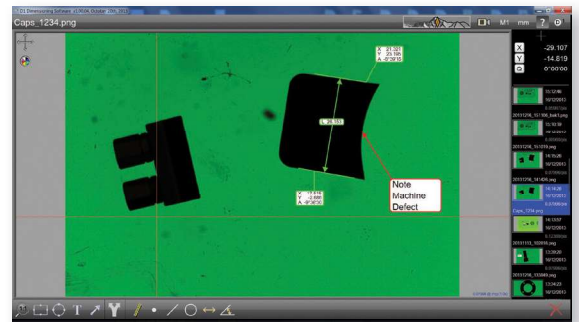
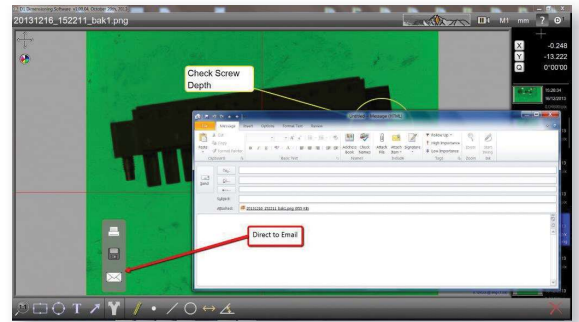


Monitor not included

# D1 INSPECTION SOFTWARE

## FEATURES

- View and manipulate live and static images from a variety of inspection devices on any Windows® 7 or Windows® 8 PC. Mouse/Keyboard and touchscreen systems are supported.
- A simplified operating interface requires only a few quick clicks to capture, mark up, export, print and email images directly from your inspection equipment
- Zoom and Pan the camera feed until the desired image is displayed. Add custom text, and graphic elements to generate detailed image capture for defect reporting and to improve overall visual communication of parts and component characteristics.
- Perform basic calculations of feature size, position, and orientation using a simple cross-hair tool. Translate or rotate the cross-hair tool within the image window to probe circle, line, point, and angle features within the field of view.
- Add feature annotation directly to selected features to display size, position and orientation results on either the video frame or within a blank part view space
- Access previously stored images easily in the thumbnail image list. Convenient date and time stamps are added to help sort and review collections of images.



D1 Software display



KineMic - KMR with D1 software



# CONTACT INFORMATION GUIDE FOR NORTH AMERICA

COMPLETE, UP-TO-DATE CONTACT INFORMATION AVAILABLE AT STARRETT.COM

## PRIMARY CONTACTS, SALES AND GENERAL INFORMATION

### WORLD HEADQUARTERS AND PRECISION TOOLS:

Athol, MA, (978) 249-3551

### METROLOGY EQUIPMENT (OPTICAL AND VISION):

Laguna Hills, CA, (949) 348-1213

### LASER MEASUREMENT:

Columbus, GA, (706) 323-5142

### GRANITE SURFACE PLATES AND ACCESSORIES:

Waite Park, MN, (320) 251-7171

### GAGE BLOCKS:

Cleveland, OH, (440) 835-0001

### CANADA:

Mississauga, Ontario, (905) 624-2750

### MEXICO:

Saltillo, Coah, Mexico, (844) 432-4660

## CALIBRATION

### PRECISION TOOLS AND GAGES:

Athol, MA, (978) 249-3551

Starrett Calibration Services, Duncan, SC, (864) 433-8407

### METROLOGY EQUIPMENT (OPTICAL AND VISION):

(949) 348-1213

### GRANITE SURFACE PLATES AND ACCESSORIES:

(320) 251-7171

### GAGE BLOCKS:

(440) 835-0001

In Canada, please call (905) 624-2750

In Mexico, please call (844) 432-4660

## REPAIR

### PRECISION TOOLS AND GAGES:

Athol, MA, (978) 249-3551

### METROLOGY EQUIPMENT (OPTICAL AND VISION):

(949) 348-1213

### GRANITE SURFACE PLATES AND ACCESSORIES:

(320) 251-7171

### GAGE BLOCKS:

(440) 835-0001

In Canada, please call (905) 624-2750

In Mexico, please call (844) 432-46-60

## CUSTOM SOLUTION DEVELOPMENT

### SPECIAL TOOLS AND GAGES:

Athol, MA, (978) 249-3551

### METROLOGY SYSTEM DEVELOPMENT AND CONFIGURATION:

Laguna Hills, (949) 348-1213

### GRANITE BASED CUSTOM PRODUCTS:

Waite Park, MN, (320) 251-7171

In Canada, please call (905) 624-2750

In Mexico, please call (844) 432-4660

## ADDITIONAL AND/OR UP-TO-DATE INFORMATION

starrett.com

Product Literature and Educational Materials:

Select the "Catalogs" button at starrett.com to order printed product information and to access literature PDFs for viewing and/or downloading

In Canada, please call (905) 624-2750

In Mexico, please call (844) 432-4660

## CORPORATE HEADQUARTERS AND MAIN FACTORY

### THE L.S. STARRETT COMPANY

121 Crescent Street

Athol, MA 01331-1915 - U.S.A.

Tel: (978) 249-3551

Main Fax: (978) 249-8495

## INTERNATIONAL LOCATIONS

### BRAZIL

Starrett Indústria e Comércio Ltda.

Av. Larooy S. Starrett 1880 - Bairro Pinheirinho

Caixa Postal 171

13306-900 Itu, São Paulo - Brazil

Tel: 55 11 2118-8200

Fax: 55 11 2118-8003

### SCOTLAND

The L.S. Starrett Company Ltd.

Jedburgh TD8 6LR - Scotland

Tel: 44 (0) 1835 863501

Fax: 44 (0) 1835 863018

### CHINA

Starrett Tools (Suzhou) Company Limited

Suzhou Industrial Park

No. 339. Su Hong Zhong Road

Suzhou, Jiangsu Province

P.R. China 215021

Tel: 86 512 6741940

Fax: 86 512 67415697





## STARRETT PRODUCT LINES

Band Saw Blades

Force Measurement

Material Test

Jobsite & Workshop Tools

Laser Measurement

Metrology Equipment

Precision Granite

Precision Ground Solutions

Precision Measuring Tools

PTA & Hand Tools

Roundness Measurement

Service

Webber Gage Blocks

## METROLOGY SYSTEMS



Follow us!



starrett.com

Catalog 81

Metrology Systems

01/16

5M/TP

The L.S. Starrett Company 2015© Specifications subject to change.

# Starrett®

Phone: (978) 249-3551 | Fax: (978) 249-8495  
121 Crescent Street-Athol, MA 01331-1915-USA